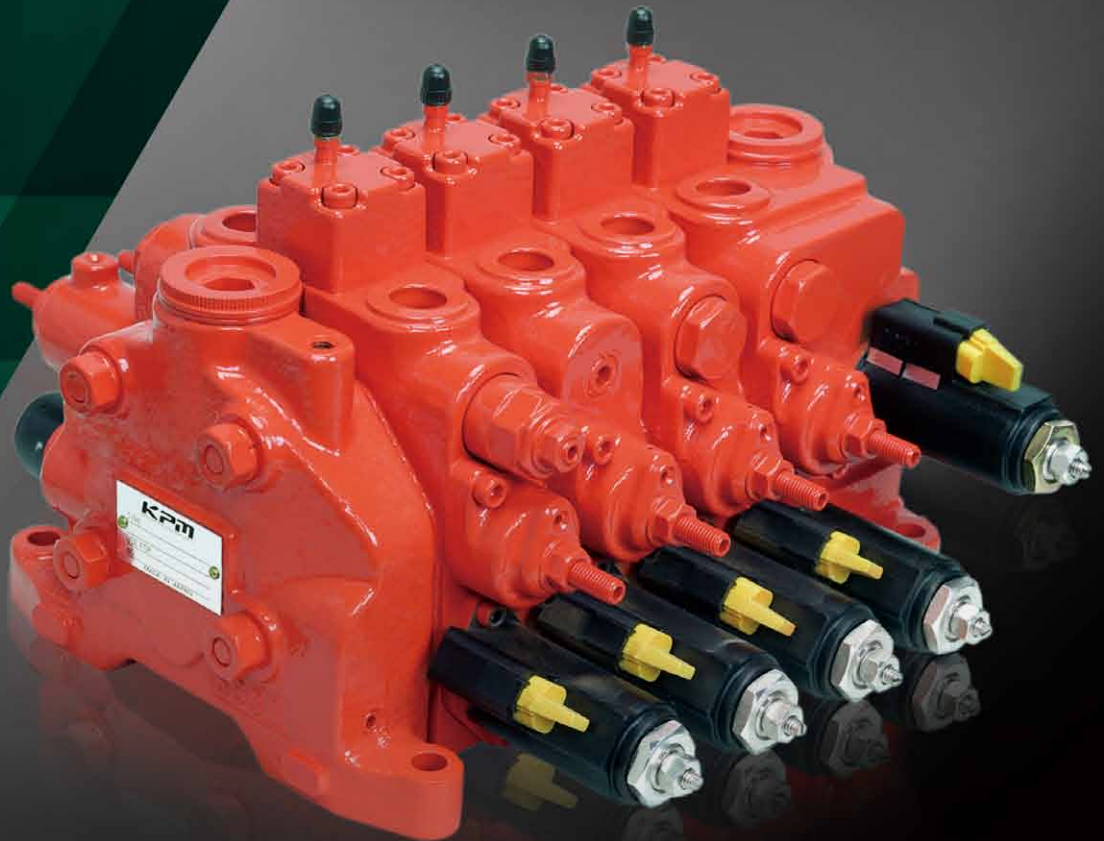


MULTIPLE CONTROL VALVE
WITH PRESSURE COMPENSATOR

KMP series

The KMP series offers electro-proportional control valve with integrated pressure compensator and internal pilot supply for electro-hydraulic control of various mobile vehicles.



KMP series

ADVANTAGES

High Controllability

High controllability enables precise inching operations. Integrated pressure compensator ensures stable operation control in low flow ranges.

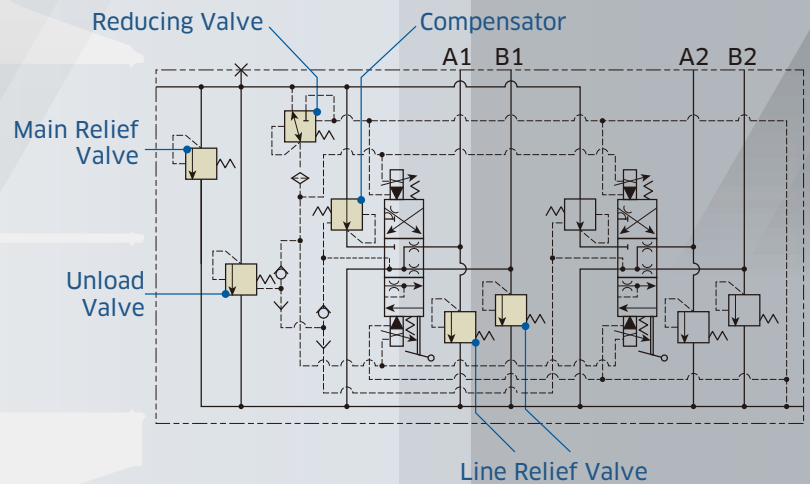
Emergency Operation

Equipped with a manual control lever, manual operation is available in case of emergency.

Compact Design

The internal pilot system which eliminates external pilot pressure source requirements enables compact design.

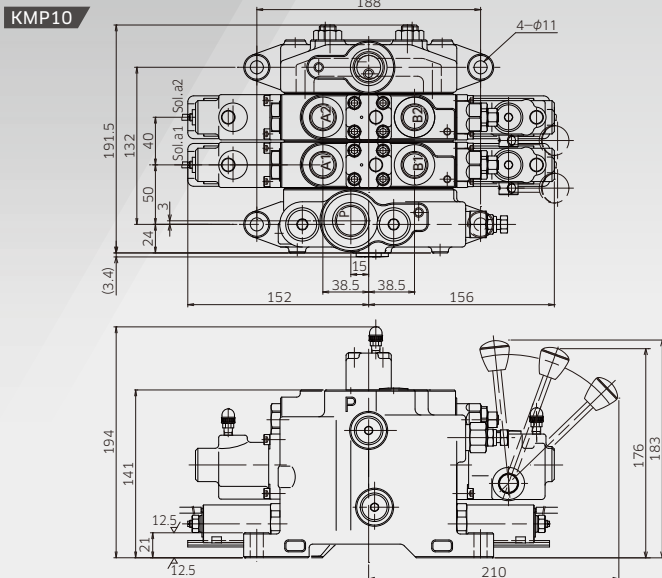
Hydraulic Circuit for KMP10



DIMENSIONS

Installation Dimensions

Unit: mm



LINEUP



Model	KMP10	
Max Pressure [MPa]	30.9	
Rated Flow [L/min]	P port	70
	Lowering & Lifting	10

SOLENOID SPECIFICATIONS

Model	KMP10	
Rated Current [A]	0.7	1.6
Coil Resistance at 20 °C [Ω]	17.5	3.2

Specifications are subject to change without notice.

Kawasaki Heavy Industries, Ltd.
Precision Machinery Company
<http://www.khi.co.jp/kpm/>

Tokyo Head Office
1-14-5, Kaigan, Minato-ku, Tokyo 105-8315, Japan
Tel: +81-3-3435-6862 Fax: +81-3-3435-2023

Kobe Head Office
Kobe Crystal Tower, 1-3 Higashikawasaki-cho 1-chome, Chuo-ku, Kobe 650-8680, Japan
Tel: +81-78-360-8607 Fax: +81-78-360-8609

Nishi-kobe Works
234, Matsumoto, Hasetani-cho, Nishi-ku, Kobe 651-2239, Japan
Tel: +81-78-991-1160 Fax: +81-78-991-3186

Kawasaki Precision Machinery (UK) Ltd.
Ernesettle Lane, Ernesettle, Plymouth, Devon, PL5 2SA United Kingdom
Tel: +44-1752-364394 Fax: +44-1752-364816
<http://www.kpm-eu.com>

Kawasaki Precision Machinery (U.S.A.), Inc.
3838 Broadmoor Avenue S.E. Grand Rapids, Michigan 49512, U.S.A.
Tel: +1-616-975-3100 Fax: +1-616-975-3103
<http://www.kpm-usa.com>

Kawasaki Precision Machinery Trading (Shanghai) Co., Ltd.
17th Floor (Room 1701), The Headquarters Building, No168, XiZang Road (M), Huangpu District, Shanghai, 200001, China
Tel: +86-21-3366-3800 Fax: +86-21-3366-3808

Flutek, Ltd.
98 GIL 6, Gongdan-Ro, Seongsan-Ku, Changwon-Si, Kyungnam, 641-370, Korea
Tel: +82-55-210-5900 Fax: +82-55-286-5557

Wipro Kawasaki Precision Machinery Private Limited
No. 15, Sy. No. 35 & 37, Kumbalgodu Industrial Area, Kumbalgodu Village, Kengeri Hobli, Bangalore, -560074, India



QR code
Precision Machinery
Company Website